

Bottom-Freezer Refrigerators

Safety Instructions 2, 3

Operating Instructions

Care and Cleaning of
the refrigerator 6, 7
Control Settings 4, 5

Installation Instructions

Preparing to Install
the Refrigerator 8
Reversing the Door Swing 9-11

Troubleshooting Tips ... 12-14

Normal Operating Sounds 12

Consumer Support

Consumer Support 18
Product Registration 15, 16
Warranty 17

**Owner's Manual and
Installation Instructions**

Model MBR12

**La section française
commence à la page 19.**

**Write the model and serial
numbers here:**

Model _____

Serial _____

You can find them on a label inside
the refrigerator on the upper left
side wall.

IMPORTANT SAFETY INFORMATION. READ ALL INSTRUCTIONS BEFORE USING.

⚠ WARNING!

Use this appliance only for its intended purpose as described in this Owner's Manual.



SAFETY PRECAUTIONS

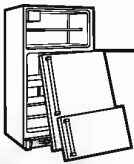
When using electrical appliances, basic safety precautions should be followed, including the following:

- This refrigerator must be properly installed and located in accordance with the Installation Instructions before it is used.
- Do not allow children to climb, stand or hang on the shelves in the refrigerator. They could damage the refrigerator and seriously injure themselves.
- Do not touch the cold surfaces in the freezer compartment, particularly when hands are damp or wet. Skin may stick to these extremely cold surfaces.
- Do not store or use gasoline or other flammable vapors and liquids in the vicinity of this or any other appliance.
- In refrigerators with automatic icemakers, avoid contact with the moving parts of the ejector mechanism, or with the heating element that releases the cubes. Do not place fingers or hands on the automatic icemaking mechanism while the refrigerator is plugged in.
- Keep fingers out of the "pinch point" areas; clearances between the doors and between the doors and cabinet are necessarily small. Be careful closing doors when children are in the area.
- Unplug the refrigerator before cleaning and making repairs.

NOTE: We strongly recommend that any servicing be performed by a qualified individual.
- Turning the control to the **OFF** position does not remove power to the light circuit.
- Do not refreeze frozen foods which have thawed completely.
- **Before replacing a burned-out light bulb, the refrigerator should be unplugged** in order to avoid contact with a live wire filament. (A burned-out light bulb may break when being replaced.)

⚠ DANGER! RISK OF CHILD ENTRAPMENT

PROPER DISPOSAL OF THE REFRIGERATOR



Child entrapment and suffocation are not problems of the past. Junked or abandoned refrigerators are still dangerous...even if they will sit for "just a few days." If you are getting rid of your old refrigerator, please follow the instructions below to help prevent accidents.

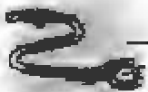
Before You Throw Away Your Old Refrigerator or Freezer:

- Take off the doors.
- Leave the shelves in place so that children may not easily climb inside.

Refrigerants

All refrigeration products contain refrigerants, which must be removed prior to product disposal. If you are getting rid of an old refrigeration product, check with the company handling the disposal about what to do.

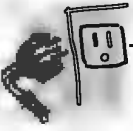
USE OF EXTENSION CORDS



Because of potential safety hazards under certain conditions, we strongly recommend against the use of an extension cord.

However, if you must use an extension cord, it is absolutely necessary that it be a UL-listed (in the United States) or a CSA-listed (in Canada), 3-wire grounding type appliance extension cord having a grounding type plug and outlet and that the electrical rating of the cord be 15 amperes (minimum) and 120 volts.

⚠ WARNING!



HOW TO CONNECT ELECTRICITY

Do not, under any circumstances, cut or remove the third (ground) prong from the power cord. For personal safety, this appliance must be properly grounded.

The power cord of this appliance is equipped with a 3-prong (grounding) plug which mates with a standard 3-prong (grounding) wall outlet to minimize the possibility of electric shock hazard from this appliance.

Have the wall outlet and circuit checked by a qualified electrician to make sure the outlet is properly grounded.

Where a standard 2-prong wall outlet is encountered, it is your personal responsibility and obligation to have it replaced with a properly grounded 3-prong wall outlet.

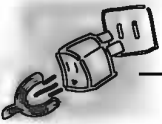
The refrigerator should always be plugged into its own individual electrical outlet which has a voltage rating that matches the rating plate.

This provides the best performance and also prevents overloading house wiring circuits which could cause a fire hazard from overheated wires.

Never unplug your refrigerator by pulling on the power cord. Always grip plug firmly and pull straight out from the outlet.

Repair or replace immediately all power cords that have become frayed or otherwise damaged. Do not use a cord that shows cracks or abrasion damage along its length or at either end.

When moving the refrigerator away from the wall, be careful not to roll over or damage the power cord.



USE OF ADAPTER PLUGS

Adapter plugs are not permitted in Canada.



READ AND FOLLOW THIS SAFETY INFORMATION CAREFULLY.

SAVE THESE INSTRUCTIONS

Safety Instructions

Operating Instructions

Installation Instructions

Troubleshooting Tips

Consumer Support

About the control on the refrigerator.

Use your appliance according to the following instructions. Appearance and features may vary. When the appliance is powered on for the first time, the backlighting of the icons will turn on. If no buttons have been pressed and the doors are closed, the backlighting will turn off.



Controlling the temperature

We recommend that when you start your refrigerator for the first time, the temperature for the refrigerator is set to 4°C/39°F and the freezer to -18°C/-1°F. If you want to change the temperature, follow the instructions below.

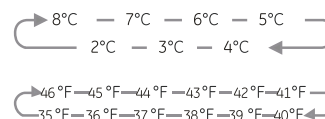
Caution! When you set a temperature, you set an average temperature for the whole refrigerator cabinet. Temperatures inside each compartment may vary from the temperature values displayed on the panel, depending on how much food you store and where you place them. Ambient temperature may also affect the actual temperature inside the appliance.

°C/°F conversion

The temperature display can be converted between °C and °F by pressing the "Holiday" & "Alarm" buttons at the same time for 3 seconds.

1. REFRIGERATOR TEMP

Press this button to set refrigerator temperature between 2°C/35°F and 8°C/46°F as needed, and the control panel will display corresponding values according to the following sequence.

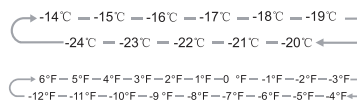


In case of temperature alarm, press "Alarm" button for 3 seconds to check the highest freezer temperature. The temperature value and "Alarm" icon will simultaneously flash for 5 seconds. This function may not be available according to the model.

Caution! When power is restored, it is normal that the temperature alarm appears, this can be cleared by pressing Alarm .

2. FREEZER TEMP

Press this button to set freezer temperature between -14°C/6°F and -24°C/-12°F as needed, and control panel will display corresponding values according to the following sequence.



Super Cool

If you desire the temperature inside the refrigerator compartment to drop quickly, press the **SUPER COOL** button . The icon will be illuminated and the refrigerator temperature setting will display 2°C/35°F. **SUPER COOL** automatically switches off after 6 hours.

When super cool function is on you can switch it off by pressing " **SUPER COOL** " or " **REFRIGERATOR TEMP** " button and the refrigerator temperature setting will revert back to the previous setting.

Super Freeze

If you wish to drop the temperature inside the freezer compartment quickly, press the **SUPER FREEZE** button. Once the button is pressed, the **SUPER FREEZE** icon will illuminate and the the refrigerator temperature setting will display -24°C/-12°F.

To attain maximum freezing performance,

wait about 24 h.

SUPER FREEZE automatically switches off after 26 hours. When the **SUPER FREEZE** function is on you can switch it off by pressing the **SUPER FREEZE** or “Freezer” button and the freezer temperature setting will revert back to the previous setting.

ALARM

The refrigerator's alarm may sound to alert you that an action is required on your end. In such a case, the ALARM icon will be on and there will be a buzzing sound. Press the ALARM button to stop the alarm sound and the ALARM icon will also be turned off.

1. Door Alarm

When either door is open for over 2 minutes, the alarm will sound.

Buzzer will sound 3 times every 1 min and will stop automatically after about 10 minutes. To save energy, please avoid keeping the door open for a long time when using the appliance. The door alarm can also be cleared by closing the refrigerator door.

2. Temperature alarm

If the freezer temperature is too high due to power failure or other reasons, there will be a temperature alarm and the freezer temperature setting displays “--”.

NOTE:

1. In the case of a temperature alarm, buzzer will sound 10 times and then stop automatically.
2. In the case of a temperature alarm, press the ALARM button for 3 seconds to check the highest freezer temperature. The temperature value and ALARM icon will simultaneously flash for 5 seconds. This function may not be available according to the model.
3. When power is restored, it is normal that the temperature alarm appears, this can be cleared by pressing the ALARM button .

Care and cleaning of the refrigerator.

geappliances.ca

Cleaning the Outside

Keep the outside clean. Wipe with a clean cloth lightly dampened with mild liquid dish detergent. Dry with a clean, soft cloth.

Do not wipe the refrigerator with a soiled dish cloth or wet towel. These may leave a residue that can erode the paint. Do not use scouring pads, powdered cleaners, bleach or cleaners containing bleach because these products can scratch and weaken the paint finish.

Protect the paint finish. The finish on the outside of the refrigerator is a high quality, baked-on paint finish. With proper care, it will stay new-looking and rust free for years. Apply a coat of kitchen/appliance wax when the refrigerator is new, and then at least twice a year.

Cleaning the Inside

To help prevent odors, leave an open box of baking soda in the fresh food and freezer compartments.

Unplug the refrigerator before cleaning. If this is not practical, wring excess moisture out of sponge or cloth when cleaning around switches, lights or controls.

Use warm water and baking soda solution—about a tablespoon (15 ml) of baking soda to a quart (1 liter) of water. This both cleans and neutralizes odors. Rinse and wipe dry.

Other parts of the refrigerator—including door gaskets, fruit and vegetable drawers, and all plastic parts—can be cleaned the same way.

After cleaning the door gaskets, apply a thin layer of petroleum jelly to the door gaskets at the hinge side. This helps keep the gaskets from sticking and bending out of shape. Do not use cleansing powders or other abrasive cleaners.

Defrost water pan. The non-removable pan is located under the compressor at the rear of the refrigerator. It should be cleaned at least once a year. Move the refrigerator out from the wall as far as necessary, and unplug the power cord from the wall outlet. Let the compressor cool before cleaning the pan. Use a clean cloth or sponge dampened in warm water and baking soda solution—one tablespoon (15 ml) of baking soda to a quart (1 liter) of water. **Do not use** cleansing powders, abrasive cleaners, bleach or cleaners containing chlorides.

Do not wash any plastic refrigerator parts in the dishwasher.

Behind the Refrigerator

Once a year, move the refrigerator out and vacuum. Be careful when moving the refrigerator away from the wall. All types of floor coverings can be damaged, particularly cushioned covering and those with embossed surfaces.

Pull the refrigerator straight out and return it to position by pushing it straight in. Moving the refrigerator in a side direction may result in damage to the floor covering or refrigerator.

When pushing the refrigerator back, make sure you don't roll over the power cord.

Preparing for Vacation

For long vacations or absences, remove food and unplug the refrigerator. Clean the interior with a baking soda solution of one tablespoon (15 ml) of baking soda to one quart (1 liter) of water. Leave the doors open.

Preparing to Move

Secure all loose items such as shelves and drawers by taping them securely in place to prevent damage.

Be sure the refrigerator stays in an upright position during moving.

Safety Instructions

Operating Instructions

Installation Instructions

Troubleshooting Tips

Consumer Support

Installation Instructions

Refrigerator

If you have questions, call 1.800.561.3344 or visit our Website at: geappliances.ca.

BEFORE YOU BEGIN

Read these instructions completely and carefully.

- **IMPORTANT** – Save these instructions for local inspector's use.
- **IMPORTANT** – Observe all governing codes and ordinances.
- **Note to Installer** – Be sure to leave these instructions with the Consumer.
- **Note to Consumer** – Keep these instructions for future reference.
- Skill level – Installation of this appliance requires basic mechanical skills.
- Completion time – Refrigerator Installation
15 minutes
Reversing the Door Swing
1 hour
- Proper installation is the responsibility of the installer.
- Product failure due to improper installation is not covered under the Warranty.

REFRIGERATOR LOCATION

- Do not install the refrigerator where the temperature will go below 55°F (13°C) because it will not run often enough to maintain proper temperatures.
- Install it on a floor strong enough to support it fully loaded.
- Do not install it closer than 5" (13 cm) next to a range.

CLEARANCES

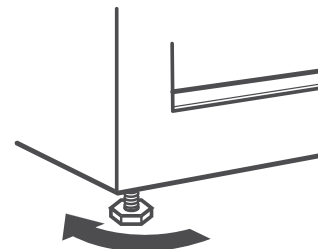
For optimal performance of your refrigerator, the following clearances are recommended:

- Sides 4" (10cm)
- Top 4" (10cm)
- Back 2" (5 cm)

LEVELING LEGS

Adjustable legs at the front corners of the refrigerator should be set so the refrigerator is firmly positioned on the floor, and the front is raised just enough that the door closes easily when opened about halfway.

To adjust the leveling legs, turn the legs **clockwise to raise** the refrigerator, **counterclockwise to lower** it.



To raise the refrigerator

Installation Instructions

REVERSING THE DOOR SWING

IMPORTANT NOTES

When reversing the door swing:

- Read the instructions all the way through before starting.
- Handle parts carefully to avoid scratching paint.
- Set screws down by their related parts to avoid using them in the wrong places.
- Provide a non-scratching work surface for the doors.

IMPORTANT: Once you begin, do not move the cabinet until door-swing reversal is completed.

These instructions are for changing the hinges from the right side to the left side—if you ever want to change the hinges back to the right side, follow these same instructions and reverse all references to left and right.

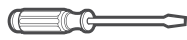
Unplug the refrigerator from its electrical outlet.

Empty all door shelves.

TOOLS YOU WILL NEED



3/8" and 5/16" Socket driver



Thin-blade screwdriver



Phillips screwdriver

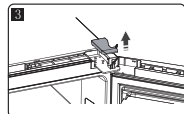
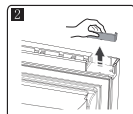
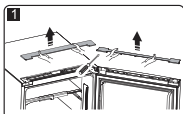
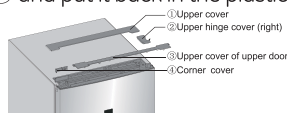


Masking tape

1 REMOVE THE TOP DOOR COVER

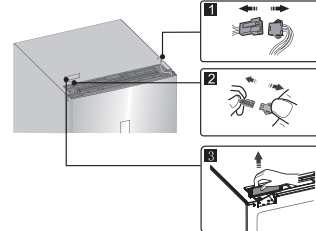
A Place the refrigerator upright. Open the upper door to take out all door racks (to avoid racks getting damaged) and then close the door.

B Open part ① on top of the refrigerator body from right side and then take down part ③ and part ④ on the upper door in the same way. Take down part ② and put it back in the plastic bag.

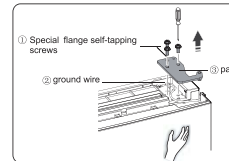


2 REMOVE THE FRESH FOOD DOOR

A Disconnect electrical connector ① as well as electrical connector ② and then take down part ③.

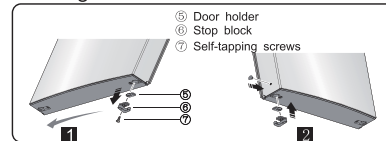


B Remove the screws ①, loose wire ②, and remove part ③.



Note: Please hold the upper door by hand during step 2B to prevent door dropping.

C Remove the upper door and place it on a smooth surface with its panel upwards. Loose screws ⑦, detach part ⑥ and part ⑤ then install part ⑤ and another part ⑥ (in the plastic bag) to the left side with screws ⑦. Put part ⑥ just detached back to plastic bag.



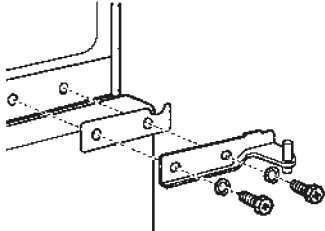
CAUTION: Do not let door drop to the floor.

Installation Instructions

REVERSING THE DOOR SWING (CONT.)

3 REMOVE THE FREEZER DOOR

- A** Tape the door shut with masking tape.
- B** Remove the center hinge and shim(s) by removing the screws. Be sure to keep the shim(s).



- C** Remove the tape and lift the door off the bottom hinge pin.
- D** Set the door on a non-scratching surface.

▲ CAUTION: Do not let door drop to the floor.

4 INSTALLING THE DOOR STOPS

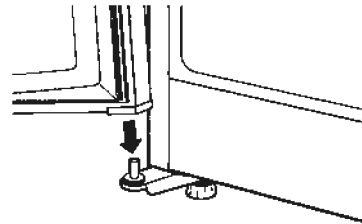
- A** With the doors laying on a non-scratching surface, remove the door stop from the bottom of each door using a Phillips screw driver.
- B** Retrieve new door stops from the accessory bag.
- C** Install new door stop on the opposite side of each door by fully inserting the pin into the hole in the door. You may have to clear the hole of insulation foam using a screw driver. Secure each door stop in place with the screw provided.

5 TRANSFER BOTTOM HINGE TO THE LEFT

- A** Remove the bottom hinge bolts with a 5/16" socket driver. Discard the hinge to the accessory bag, saving the shim(s).
- B** Using a flat blade screw driver, remove the bottom hinge hole covers from the left side and transfer to the right side.
- C** Retrieve a new bottom hinge from the accessory bag and install the new hinge and shim(s) on the left side. Do not tighten the bolts completely.

6 REHANG THE FREEZER DOOR

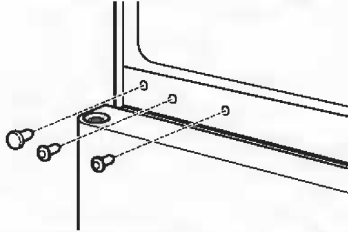
- A** Place the freezer door on the bottom hinge, close the door, **MAKE SURE IT IS ALIGNED PROPERLY**, and tape it in place with masking tape.
- B** Tighten the bottom hinge bolts completely, ensuring that the door is level and aligned properly.



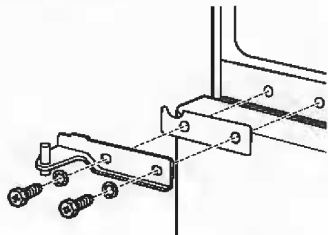
Installation Instructions

7 INSTALL CENTER HINGE ON THE LEFT

- A** Remove the two plug buttons on the left side and install them on the right. Remove the mullion screw and screw cover on the left side with a Phillips screwdriver and install on the right.



- B** Rotate the center hinge and shim(s) 180 degrees and install on the left side as shown. Make sure that the hinge pin inserts into the hole in the top of the freezer door.



- C** Tighten the screws and remove the tape holding the door shut.

CAUTION: When assembled correctly, the hinge is tight against the cabinet.

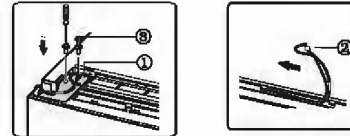
ATTENTION: The screws must be properly tightened. Turn the screws until snug. Then tighten the screws a minimum of 1/2 turn using both hands.

8 REHANG THE FRESH FOOD DOOR

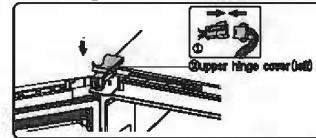
- A** Screw out the upper hinge axis, turn the upper hinge over and fix axis on it. Then place it at side for use. Exchange wires both in the left and right slots of refrigerator body.



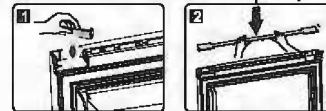
- B** Move the upper door to appropriate position, adjust part ① and upper door, Move the connecting wire ② in the slot of upper door from right to left, and then fix part ① and wire ② by screws ③. (Please hold upper door by hand when installing)



- C** Connect electrical connector ① in accordance with step 2A and then install part ② (which is in the plastic bag).



- D** Reverse part ① by 180° and install it onto the right corner of upper door, then mount part ②. (both of which are taken down in step 1B)

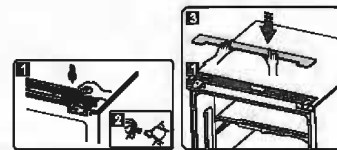


- E** Take the reed switch out of the coping block (part ③ in step 2A) and mount it on another block for use (which is with mark "R" in the plastic bag). Put the Coping block just removed back to the plastic bag.



Note: Be sure character side of reed switch fits well with coping block.

- F** Install part ①, connector ②, and then install part ③.



9 INSTALL TOP COVER

- A** Re-install the top cover, sliding it into place and securing with the 5 original screws.

Normal operating sounds.



Newer refrigerators sound different from older refrigerators. Modern refrigerators have more features and use newer technology.

Do you hear what I hear? These sounds are normal.

**HUMMM...
WHOOSH...**

- The new high efficiency compressor may run faster and longer than your old refrigerator and you may hear a high-pitched hum or pulsating sound while it is operating.
- You may hear a whooshing sound when the doors close. This is due to pressure equalizing within the refrigerator.



- You may hear the fans spinning at high speeds. This happens when the refrigerator is first plugged in, when the doors are opened frequently or when a large amount of food is added to the refrigerator or freezer compartments. The fans are helping to maintain the correct temperatures.

**CLICKS, POPS,
CRACKS and CHIRPS**

- You may hear cracking or popping sounds when the refrigerator is first plugged in. This happens as the refrigerator cools to the correct temperature.
- The compressor may cause a clicking or chirping sound when attempting to restart (this could take up to 5 minutes).
- Expansion and contraction of cooling coils during and after defrost can cause a cracking or popping sound.
- On models with an icemaker, after an icemaking cycle, you may hear the ice cubes dropping into the ice bucket.

WATER SOUNDS



- The flow of refrigerant through the freezer cooling coils may make a gurgling noise like boiling water.
- Water dropping on the defrost heater can cause a sizzling, popping or buzzing sound during the defrost cycle.
- A water dripping noise may occur during the defrost cycle as ice melts from the evaporator and flows into the drain pan.
- Closing the door may cause a gurgling sound due to pressure equalization.

Before you call for service...



Troubleshooting Tips
 Save time and money! Review the charts on the following pages first and you may not need to call for service.

	Possible Causes	What To Do
Refrigerator does not operate	Refrigerator in defrost cycle.	• Wait about 30 minutes for defrost cycle to end.
	Control IS TURNED OFF.	• Press ON/OFF button and check for operation to begin.
	Refrigerator is unplugged.	• Push the plug completely into the outlet.
	The fuse is blown/circuit breaker is tripped.	• Replace fuse or reset the breaker.
Vibration or rattling (slight vibration is normal)	Front leveling legs need adjusting.	• See <i>Leveling Legs</i> .
Motor operates for long periods or cycles on and off frequently. (Modern refrigerators with more storage space and a larger freezer require more operating time. They start and stop often to maintain even temperatures.)	Normal when refrigerator is first plugged in.	• Wait 24 hours for the refrigerator to completely cool down.
	Often occurs when large amounts of food are placed in refrigerator.	• This is normal.
	Door left open.	• Check to see if package is holding door open.
	Hot weather or frequent door openings.	• This is normal.
	Temperature control set at the coldest setting.	• See <i>About the control</i> .
Fresh food or freezer compartment too warm	Temperature control not set cold enough.	• See <i>About the control</i> .
	Warm weather or frequent door openings.	• Set the temperature control one step colder. See <i>About the control</i> .
	Door left open.	• Check to see if package is holding door open.
Frost or ice crystals on frozen food (frost within package is normal)	Door left open.	• Check to see if package is holding door open.
	Too frequent or too long door openings.	
Ice cubes have odor/taste	Food transmitting odor/taste to ice cubes.	• Wrap foods well.
	Interior of refrigerator needs cleaning.	• See <i>Care and cleaning</i> .
Slow ice cube freezing	Door left open.	• Check to see if package is holding door open.
	Temperature control not set cold enough.	• See <i>About the control</i> .

Safety Instructions

Operating Instructions

Installation Instructions

Troubleshooting Tips

Consumer Support

Before you call for service...



Troubleshooting Tips

	Possible Causes	What To Do
Refrigerator has odor	Foods transmitting odor to refrigerator.	<ul style="list-style-type: none"> • Foods with strong odors should be tightly wrapped. • Keep an open box of baking soda in the refrigerator; replace every three months.
	Interior needs cleaning.	<ul style="list-style-type: none"> • See <i>Care and cleaning</i>.
	Defrost water pan needs cleaning.	<ul style="list-style-type: none"> • See <i>Care and cleaning</i>.
Moisture forms on outside of refrigerator	Not unusual during periods of high humidity.	<ul style="list-style-type: none"> • Wipe surface dry.
Moisture collects inside (in humid weather, air carries moisture into refrigerator when doors are opened)	Too frequent or too long door openings.	
Interior light does not work	No power at outlet.	<ul style="list-style-type: none"> • Replace fuse or reset the breaker.
	Light bulb burned out.	<ul style="list-style-type: none"> • <i>Call for service.</i>

Please place in envelope and mail to:
Veuillez mettre dans une enveloppe et envoyez à :

**OWNERSHIP REGISTRATION
P.O. BOX 1780
MISSISSAUGA, ONTARIO
L4Y 4G1**

**(FOR CANADIAN CONSUMERS ONLY -
POUR RÉSIDENTS CANADIENS SEULEMENT)**



For Canadian Customers



For all Country/States/Provinces

CUT ALONG THIS LINE AND RETURN CARD - THANKS
DÉCOUPEZ ICI ET ENVOYEZ LA FICHE - MERCI

<p>Please register your product to enable us to assist you. We will use your information to help you with your product and to allow for future communication under the terms of our warranty, should the need arise.</p>		<p>You are eligible for product site to view, purchase, download, and use of your product. You will be able to view, purchase, download, and use of your product. You will be able to view, purchase, download, and use of your product.</p>	
<p>REGISTER ONLINE: www.papillon.com</p>		<p>MAIL TO: P.O. BOX 1708, BRIDGEVIEW, ILLINOIS 60417</p>	
<p><input type="checkbox"/> US/CA <input type="checkbox"/> OTHER</p>	<p>FIRST NAME / PRÉNOM</p>	<p>LAST NAME / NOM</p>	
<p>STREET ADDRESS</p>		<p>APARTMENT / SUITE</p>	
<p>CITY / VILLE</p>		<p>PROVINCE</p>	<p>POSTAL ADDRESS / CODE</p>
<p>PHONE (AREA CODE) TELÉPHONE (PRÉFIXE)</p>		<p>E-MAIL ADDRESS</p>	
<p>DO YOU PURCHASE/ACHETER/COMMANDER FOR THE APPLIANCE? YES <input type="checkbox"/> NO <input type="checkbox"/></p>		<p>VERBA <input type="checkbox"/> P. 1000 000 000 000 000</p>	
<p>ARE YOU AGREEING TO RECEIVE OUR NEWSLETTER? YES <input type="checkbox"/> NO <input type="checkbox"/></p>		<p>VERBA <input type="checkbox"/> P. 1000 000 000 000 000</p>	
<p>NAME OF SELLER / DÉTAILLANT / Vendeur</p>		<p>MODEL / MODÈLE</p>	
<p>APPLIANCE / APPAREIL / Appareil</p>		<p>CONFIRMATION: <input type="checkbox"/> YES/ OUI</p>	
<p>CONFIRMATION: <input type="checkbox"/> NO/ NON</p>		<p>VERBA / P. 1000</p>	
<p>If you need any assistance, please contact us at 1-800-368-8888. We are happy to assist you.</p>			

Refrigerator Warranty.



All warranty service provided by authorized service centers. To schedule service, call 1.800.561.3344. Please have serial number and model number available when calling for service.

Staple your receipt here. Proof of the original purchase date is needed to obtain service under the warranty.

For The Period Of:	MC Commercial Will Replace:
One Year From the date of the original purchase	Any part of the refrigerator which fails due to a defect in materials or workmanship. During this limited one-year warranty , MC Commercial will also provide, free of charge , all labor and related service to replace the defective part.

What MC Commercial Will Not Cover:	
<ul style="list-style-type: none"> ■ Service trips to your home to teach you how to use the product. ■ Improper installation, delivery or maintenance. ■ Failure of the product if it is abused, misused, or used for other than the intended purpose or used commercially. ■ Loss of food due to spoilage. ■ Replacement of house fuses or resetting of circuit breakers. ■ Damage caused after delivery. 	<ul style="list-style-type: none"> ■ Replacement of the water filter cartridge, if included, due to water pressure that is outside the specified operating range or due to excessive sediment in the water supply. ■ Replacement of the light bulbs, if included, or water filter cartridge, if included, other than as noted above. ■ Damage to the product caused by accident, fire, floods or acts of God. ■ Incidental or consequential damage caused by possible defects with this appliance. ■ Product not accessible to provide required service.

EXCLUSION OF IMPLIED WARRANTIES—Your sole and exclusive remedy is product repair as provided in this Limited Warranty. Any implied warranties, including the implied warranties of merchantability or fitness for a particular purpose, are limited to one year or the shortest period allowed by law.

This warranty is extended to the original purchaser and any succeeding owner of products purchased in Canada for home use within Canada.

In home warranty service will be provided in areas where it is available and deemed reasonable by MC Commercial to provide.

Warrantor: MC Commercial Canada Inc., Burlington, ON L7R 5B6

Safety Instructions

Operating Instructions

Installation Instructions

Troubleshooting Tips

Consumer Support

Consumer Support.



GE Appliances Website

geappliances.ca

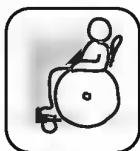
Have a question or need assistance with your appliance? Try the GE Appliances Website 24 hours a day, any day of the year! For greater convenience and faster service, you can now download Owner's Manuals, order parts or even schedule service on-line.



Schedule Service

1.800.561.3344

Expert GE repair service is only one step away from your door. Call 1.800.561.3344 during normal business hours.



Real Life Design Studio

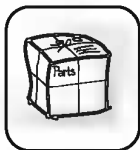
geappliances.ca

GE supports the Universal Design concept—products, services and environments that can be used by people of all ages, sizes and capabilities. We recognize the need to design for a wide range of physical and mental abilities and impairments. For details of GE's Universal Design applications, including kitchen design ideas for people with disabilities, check out our Website today.



Extended Warranties

Consult your local listings for an extended warranty provider.



Parts and Accessories

1.800.661.1616 or geappliances.ca

Consult your local listings for an authorized GE service parts provider or call 1.800.661.1616 during normal business hours.

Instructions contained in this manual cover procedures to be performed by any user. Other servicing generally should be referred to qualified service personnel. Caution must be exercised, since improper servicing may cause unsafe operation.



Contact Us

geappliances.ca

If you are not satisfied with the service you receive from GE, contact us on our Website with all the details including your phone number, or write to:

Director, Consumer Relations
MC Commercial Inc.
Suite 310, 1 Factory Lane
Moncton, NB, E1C 9M3



Register Your Appliance

geappliances.ca

Register your new appliance on-line—at your convenience! Timely product registration will allow for enhanced communication and prompt service under the terms of your warranty, should the need arise. You may also mail in the pre-printed registration card included in the packing material.